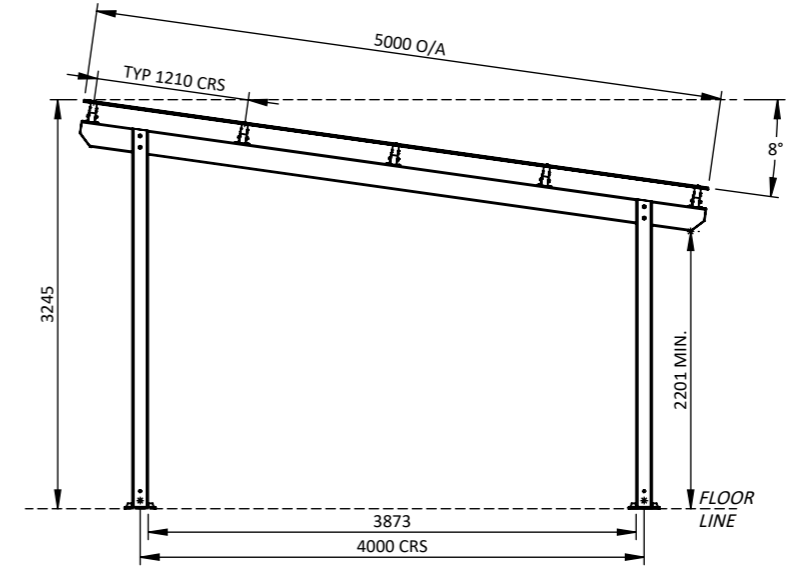
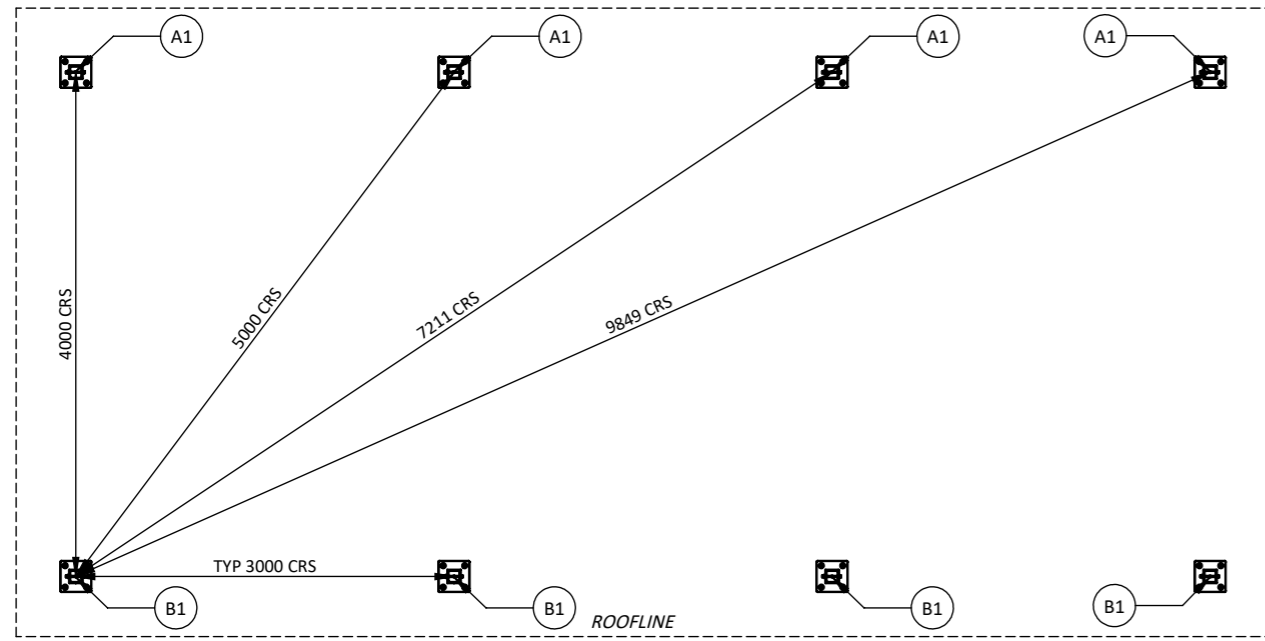


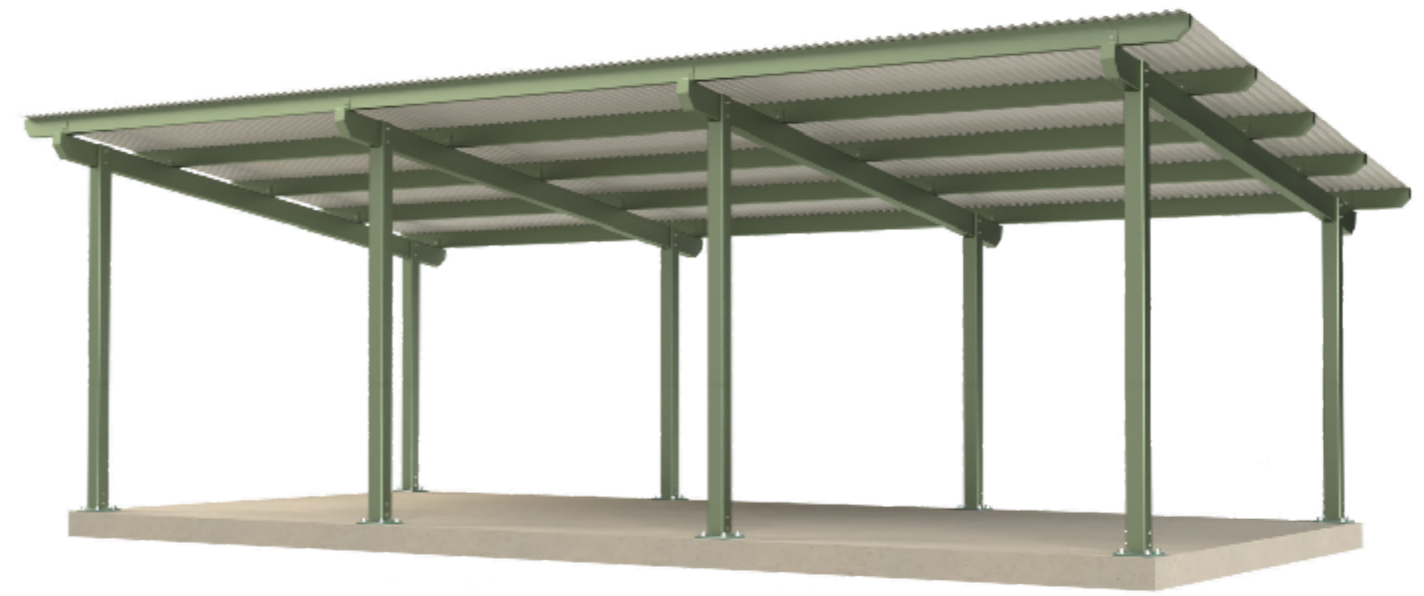
FRONT VIEW
1:60



SIDE VIEW
1:60



FOUNDATION PLAN
1:60



PICTORIAL VIEW

GOSSI
PARK & STREET FURNITURE

1082 Kingsford Smith Drive
EAGLE FARM - QLD 4009
Phone: (07) 3877 2856
Fax: (07) 3877 2890
www.gossi.com.au Email:
sales@gossi.com.au

©Copyright - This drawing
is the property of G. James
Glass & Aluminium Pty Ltd
it must not be copied or
shown to third parties
without written consent

| | | | |
|----------------|------------------------------------|-------|----|
| PROJECT | Capricorn (HD) 10x5 - Flange Mount | | |
| TITLE | General arrangement | | |
| DATE | 17/05/2023 | SCALE | A3 |
| DRAWING NUMBER | CHD-10x5-FM-SLS-1 | | |

GENERAL MATERIALS:

- Posts, framing and roofing components in extruded aluminium.
- Roof sheeting in corrugated profile coated steel.

FINISHES

- Posts, framing and brackets in Class AA25 Anodising finishes, Polyester Powder Coating or wood look aluminium.
Note: Colour may vary between alloys.
- Spigots in Polyester Powder Coating finishes.
Note: 60 Micron minimum on visible faces.

HARDWARE

- Stainless steel anti-vandal fixings.
- Roof screws colour matched roof sheets.

\\aus.gjames.com.au\shares\gjd\gossi\New 2022\Park Shelters-2022\Capricorn\10x5-N4-HD\Design\Solidworks