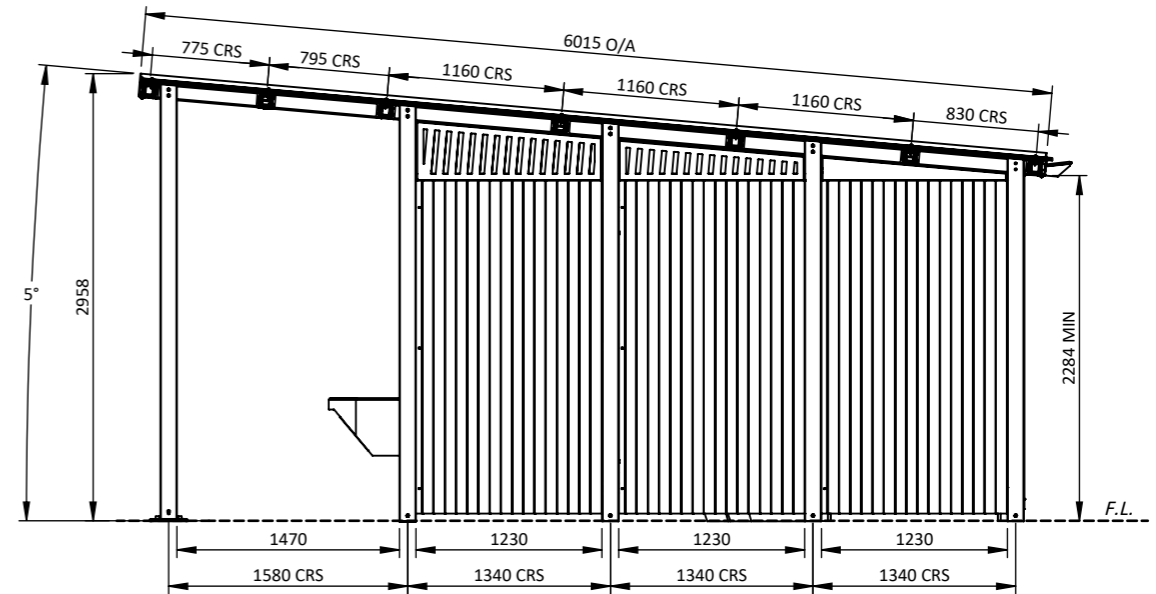
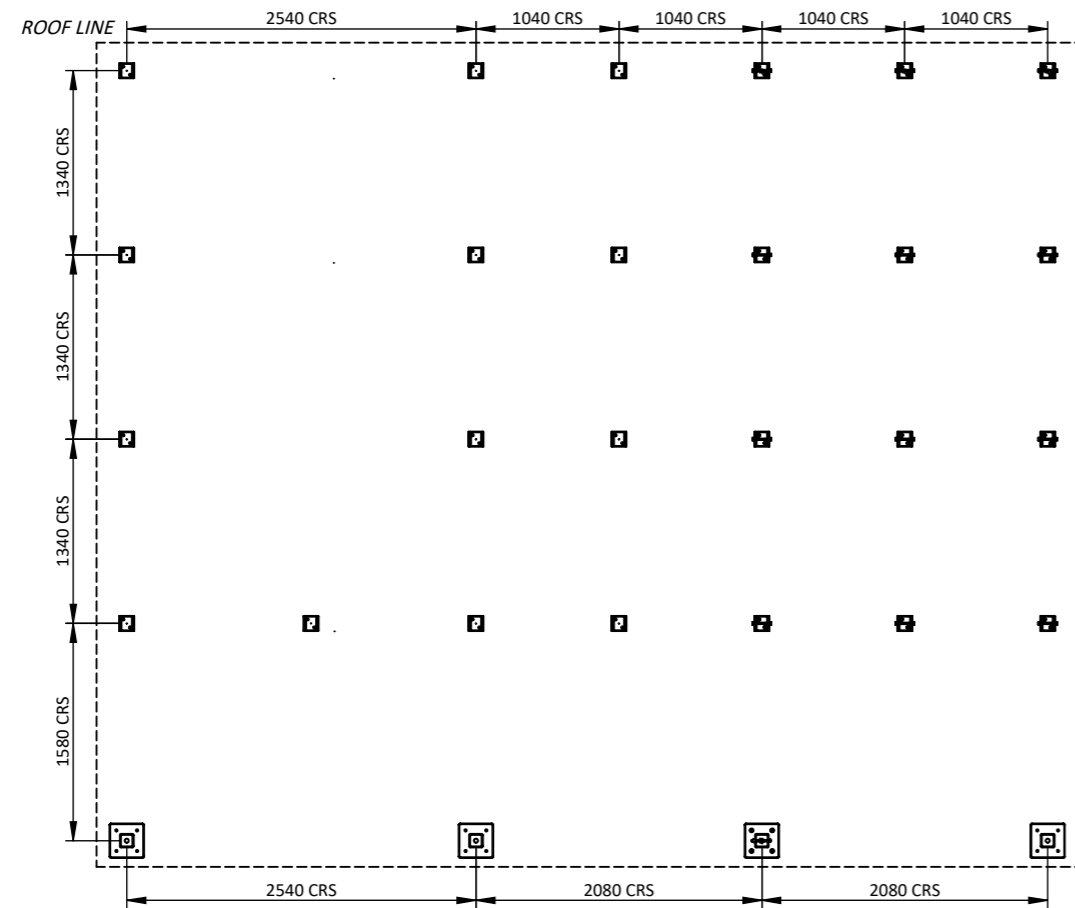


FRONT VIEW 1:50



SIDE VIEW 1:50



FOUNDATION VIEW 1:50



PICTORIAL VIEW

Certified for Structural Adequacy

Allan Hickey BE MIEAust
RPEQ #1126 EA#31894 VBA PE0000515

REV	DATE	AMENDMENT	BY	CHK

GOSSI
PARK & STREET FURNITURE

1082 Kingsford Smith Drive
EAGLE FARM - QLD 4009
Phone: (07) 3877 2856
Fax: (07) 3877 2890
www.gossi.com.au
Email: sales@gossi.com.au

DRAFTING STANDARD AS 1100	DRAWN KA
	CHECKED
DRAWING STATUS: FOR CUSTOMER	

PROJECT AMT 104S	CLIENT External Customer
TITLE GENERAL ARRANGEMENT	ISSUE A
SHEET 1 OF 2	

DATE 13/12/2022	SCALE -	A3
DRAWING NUMBER AMT-104S-SLS-1		

BUILDING COMPLIES WITH AS 1428.1 - 2009 DISABILITY ACCESS STANDARDS

UNISEX PWD WATER CLOSET COMPLIES WITH AS 1428.1 - 2009 STANDARDS

UNISEX AMB WATER CLOSET COMPLIES WITH AS 1428.1 - 2009 STANDARDS

LEGEND:

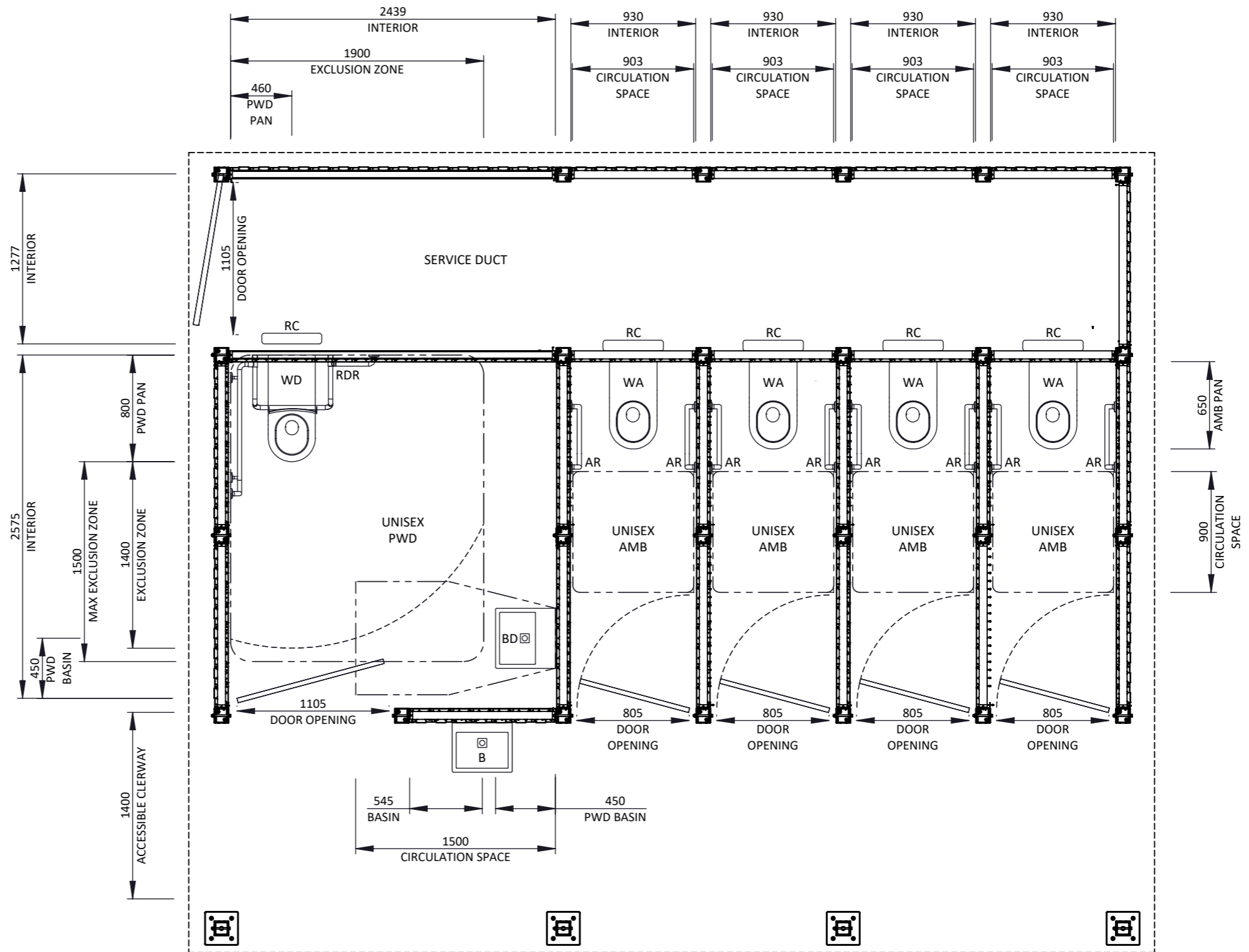
- WD = Disability compliant toilet pan
- WA = Ambulant compliant toilet pan
- WDC = Disability compliant toilet pan (with cistern)
- RC = In-wall remote cistern
- BD = Disability compliant handwashing basin
- B = Handwashing basin
- LDR = LH disability compliant hand rail
- RDR = RH disability compliant hand rail
- AR = Ambulant compliant hand rail
- CT = Changing table
- SH = Shelf

UNISEX PWD = Unisex disability compliant water closet

UNISEX AMB = Unisex ambulant compliant water closet

EXCLUSION ZONES = - - - - -

CIRCULATION SPACES = _____



COMPLIANCE DETAILS
NTS



1082 Kingsford Smith Drive
EAGLE FARM - QLD 4009
Phone: (07) 3877 2856
Fax: (07) 3877 2890
www.gossi.com.au Email:
sales@gossi.com.au

©Copyright - This drawing is the property of G.James Glass & Aluminium Pty Ltd it must not be copied or shown to third parties without written consent

PROJECT	AMT 104S		
TITLE	COMPLIANCE DETAILS		
DATE	13/12/2022	SCALE	NTS A3
DRAWING NUMBER	AMT-104S-SLS-2		

GENERAL MATERIALS:

- Posts, framing and roofing components in extruded aluminium.
- Roof sheeting in corrugated profile coated steel.

FINISHES

- Posts, framing and brackets in Class AA25 Anodising finishes, Polyester Powder Coating or wood look aluminium.
Note: Colour may vary between alloys.
- Spigots in Polyester Powder Coating finishes.
Note: 60 Micron minimum on visible faces.

HARDWARE

- Stainless steel anti-vandal fixings.
- Roof screws colour matched roof sheets.